



**TOWORKFOR®**

BOLDLY SAFE

**OPEN THIS  
AT YOUR  
OWN RISK.**



**WARWICK  
INTL.**





# **BOLDLY SAFE.**

***TOWORKFOR is a brand for real hard-working people.***

***Everything we do is bold in design, innovation, and technology, thinking about those who face real risks, every day. After all, if all the workers must be bold in their daily life, the least we can do is to be bold, too.***

***When risk is everywhere, safety is everything.***

***ARE YOU BOLD ENOUGH?***

 **TOWORKFOR<sup>®</sup>**  
BOLDLY SAFE



<b>ZERO GRAVITY</b>	<b>4 - 7</b>
<b>X-COM</b>	<b>8 - 11</b>
<b>WORKOUT</b>	<b>12 - 15</b>
<b>FULL-GRIP MICHELIN</b>	<b>16 - 23</b>
<b>VOLT1</b>	<b>24 - 27</b>
<b>MOUNTAIN SQUAD</b>	<b>28 - 31</b>
<b>SOLES</b>	<b>32</b>
<b>INSOLES, INSOCKS AND TOE CAPS</b>	<b>23</b>
<b>MATERIALS</b>	<b>34</b>
<b>STANDARDS AND SIZE CHART</b>	<b>35</b>





**ZERO GRAVITY**  
COLLECTION

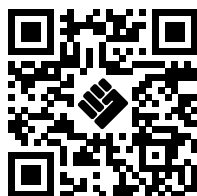
**ZERO WEIGHT.**  
**FULL COMFORT.**



# *THE ULTIMATE RUNNING SHOES YOU CAN WORK WITH.*



MORE INFO:



powered by

**POP-ENERGY**<sup>®</sup>  
TECHNOLOGY

**TOWORKFOR**<sup>®</sup>



**TOWORKFOR®**  
BOLDLY SAFE

## ZERO GRAVITY COLLECTION

# FEEL THE SAFETY, NOT THE GRAVITY.

### ADVANCED 3D MESH LINING

Special mesh knit with excellent breathability and flexibility. The high durability of the material allows it to keep the properties throughout the period of use.

### PREMIUM NUBUCK MICROFIBER AND RIPSTOP UPPER

Water resistant breathable and highly durable materials.

### Q-FLEX AMERICAN INSOLE

Non-metallic, extremely light and flexible, ideal for long activities. Excellent sweat absorptions.



### ALUMINIUM TOE CAP

Lightweight toe cap against pressure up to 200 Joules.

### CARBON PRO INSOCK

The best conductive foam for maximum performance with lightness and impulse properties.

**CARBONPRO™**

### POP-ENERGY MIDSOLE

E-TPU technology for exceptional absorption - offering high-rebound heel with superior shock absorption.

**POP-ENERGY™**  
TECHNOLOGY

### RUBBER OUTSOLE PERFORMANCE

Rubber outsole engineered for maximum traction and a smooth walk, all day long.

MORE INFO:



## CAN CSA Z195-14 ASTM F2413-18





**ZERO ALL BLACK**

8A36.80.5



**ZERO MID ALL BLACK**

8B36.80.5



**MATERIALS**

**UPPER** Premium Nubuck  
Microfiber and  
Ripstop Polyester  
**LINING** Advanced 3D Mesh  
**SOLE** Pop-Energy\* + Rubber  
**TOE CAP** Aluminium  
**INSOLE** Q-Flex American  
**INSOCK** Carbon Pro Fly  
**SIZES US Man** 3 - 14  
**US Lady** 5 - 16  
**EU** 35 - 48

**ADVANTAGES**

- ✓ Sporty Look
- ✓ Anti-slip performance
- ✓ Leighweight
- ✓ Water resistant
- ✓ Comfortable

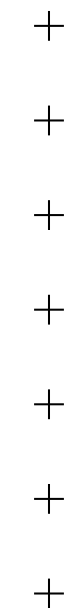
**WORK ENVIRONMENT**

- Administrative
- Logistic Work
- Warehouse
- Indoor Jobs
- Industry
- Courier
- Shopkeeper

**TASTE THE POP ENERGY FEELING.**  
**TASTE THE POP ENERGY FEELING.**  
**TASTE THE POP ENERGY FEELING.**  
**TASTE THE POP ENERGY FEELING.**



**ZERO GRAVITY**



**TOWORKFOR®**



# THE WORKAHOLICS' NEW ADDICTION.



ALUMINUM TOE CAP



ANTI-PERFORATION INSOLE



WATER ABSORPTION RESISTANCE



TOE CAP PROTECTION WITH PUNCTURE RESISTANT SOLE



SUPER STATIC DISSIPATIVE FOOTWEAR



COMFORT INSOLE

 **TOWORKFOR**<sup>®</sup>  
BOLDLY SAFE

**X-COM**







**TOWORKFOR®**  
BOLDLY SAFE

# X-COM

# BE ONE STEP AHEAD.



### X-BALANCE PRO

The precise foothold for stability.

### FLYKNIT

Soft treated leather, very breathable that significantly increases the level of comfort. Excellent resistance and durability.

### ALUMINIUM TOE CAP

Lightweight toe cap against pressure up to 200 Joules. Rubber coating for extra protection and easy cleaning.

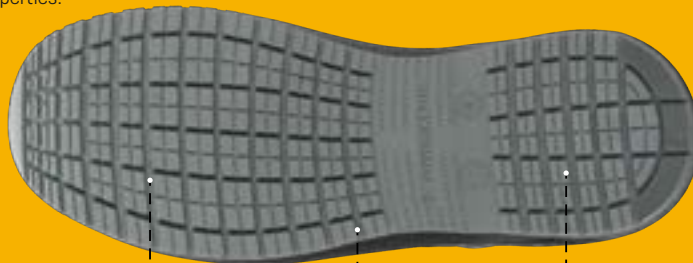


### CARBON PRO

Best conductive foam for maximum performance with lighter and impulse properties.

### Q-FLEX AMERICAN

Anti-perforation, non-metallic and anti-static insole.



### HARD STICK PU

Strategically positioned in the areas of most wear, to increase durability.

### CLEATS

Open cleats for a better fluid dispersion.

### DOUBLE DENSITY PU SOLE

Extremely soft and comfortable PU midsole in combination with hard PU outsole which provides great grip.





**X-100**

6A20.80.5



US Men 7 - 14  
US Lady 9 - 16  
EU 40 - 47



**X-101**

6A20.81.5



US Men 3 - 14  
US Lady 5 - 16  
EU 36 - 47

**MATERIALS**

**UPPER** Flyknit  
**LINING** 3D Mesh  
**SOLE** PU + PU  
**TOE CAP** Aluminium  
**INSOLE** Q-Flex American  
**INSOCK** Carbon Pro Fly

**ADVANTAGES**

- ✓ Anti-slip performance
- ✓ Versatile
- ✓ Sporty look
- ✓ Breathable
- ✓ Comfortable
- ✓ Super static dissipative footwear (SD+)

**WORK ENVIRONMENT**

- Administrative
- Logistic Work
- Warehouse
- Indoor Jobs
- Industry
- Courier
- Shopkeeper



**X-300**

6A21.60.5\*



US Men 3 - 14  
US Lady 5 - 16  
EU 36 - 47

**FOR FOOD INDUSTRY**

**MATERIALS**

**UPPER** Antibacterial Microfiber  
**LINING** 3D Mesh  
**SOLE** PU + PU  
**TOE CAP** Aluminium  
**INSOLE** Q-Flex American  
**INSOCK** Carbon Pro Fly

**ADVANTAGES**

- ✓ Anti-slip performance
- ✓ Versatile
- ✓ Sporty look
- ✓ Breathable
- ✓ Comfortable
- ✓ Super static dissipative footwear (SD+)

**WORK ENVIRONMENT**

- Food Industry
- Hygiene Industry
- Restaurants
- Hotel Industry



**ASK US TO DO  
SAFETY SHOES  
WITH A SPORTY  
LOOK AND WE'LL  
JUST DO IT.**



**TOWORKFOR®**



**TOWORKFOR®**  
BOLDLY SAFE

# WORKOUT

# WORK AS A SPORT. WIN LIKE A BOSS.



**X-STABILIZER REINFORCEMENT**

Ankle support that adjusts and gives better balance. Lace reinforcement and provides extra safety.

**FLOAT AMERICAN WITH CORK INSOLE**

Anti-perforation, non-metallic and anti-static insole.

**ANTI STRESS INSOCK**

Foam that helps to prevent muscle fatigue, while relieving heel pressure.

**ANTI STRESS™**  
ULTRA RECOVERY TECHNOLOGY

**MATERIAL 3D AIR FLOW / DRY FEET KNIT**

Extremely breathable and flexible 3D Mesh, ideal for warm environments and long activities.

**FIBERGLASS TOE CAP REINFORCED**

Lightweight toe cap against pressure up to 200 Joules. Rubber coating for extra protection and easy cleaning.

**TRIPLE SPEED EVA & RUBBER SOLE**

Smooth and extremely light midsole with a thin layer of ESD rubber. Oil resistancy and self-clean system.





**SUPER SET RED**

8A21.87.5



**SUPER SET NAVY**

8A21.86.5



**SUPER SET BLACK**

8A21.80.5



**SUPER SET MID BLACK**

8B21.90.5

**WORKOUT**

# THE BEST SPORT SAFETY SHOES, **ONLY FOR THE EXTREMELY COMPETITIVE WORKERS.**

**TOWORKFOR®**

### MATERIALS

**UPPER** DRY FEET KNIT  
**LINING** Space 3D  
**SOLE** Triple Speed Eva & Rubber  
**TOE CAP** Fiberglass Reinforced  
**INSOLE** Float American + Cork  
**INSOCK** Anti Stress®  
**SIZES** US Men 7 - 14  
US Lady 9 - 16  
EU 40 - 47

### ADVANTAGES

- ✓ Metal Free
- ✓ Anti-slip performance
- ✓ Sporty look
- ✓ Light
- ✓ Versatile
- ✓ Breathable
- ✓ Comfortable
- ✓ Electrical shock resistant (ESR)

### WORK ENVIRONMENT

- Indoor Jobs
- Courier
- Administrative
- Warehouse
- Logistic Work





# THESE BOOTS ARE NOT SAFE FOR OTHER BRANDS.



TOWORKFOR®

 **TOWORKFOR®**  
BOLDLY SAFE

**FULL  
GRIP™**

SOLES  
BY /





**TOWORKFOR®**  
BOLDLY SAFE



# FULL GRIPPING POWER FOR CHALLENGING JOBS.



## HEEL SUPPORT SYSTEM

Special system that strengthens the heel portion of the footwear. Stabilizes the leg and protects the heel.

## ZERO SHOCK INSOCK

Soft and light. Easy to remove for cleaning and drying.



## FLOAT AMERICAN WITH CORK INSOLE

Anti-perforation, non-metallic and anti-static insole.



## MICHELIN NORTH NITRILE RUBBER SOLE

Featuring an exclusive design and compound that offers exceptional abrasion resistance, along with outstanding oil and fire resistance.

## NUBUCK LEATHER

Long lasting, flexible, breathable, and water resistant materials.

## FIBERGLASS TOE CAP

Non-metallic and ultra-light toe cap against pressure up to 200 joules.

## TOE REINFORCEMENT

Extra protection and resistance.





METAL FREE

### BRAKE

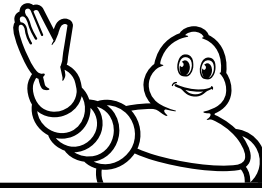
6A06.20.5



METAL FREE

### WHEELS

6B06.20.5



# MICHELIN

THE DIFFERENCE BETWEEN TRYING  
AND SUCCEEDING HAS A NAME:  
**FULL GRIP MICHELIN.**

#### MATERIALS

**UPPER** Nubuck Leather  
**LINING** Poromax  
**SOLE** Michelin North - Nitrile Rubber  
**TOE CAP** Fiberglass  
**INSOLE** Float American + Cork  
**INSOCK** Zero Shock®  
**SIZES** US Men 7 - 14  
US Lady 9 - 16  
EU 40 - 47

#### ADVANTAGES

- ✓ Metal Free
- ✓ Anti-slip performance
- ✓ High Durability
- ✓ Versatile
- ✓ Breathable
- ✓ Comfortable
- ✓ Water Resistant

#### WORK ENVIRONMENT

- Mechanic
- Construction
- Engineering
- Oil platforms
- Outdoor Jobs
- Industry

FULL-GRIP MICHELIN



TOWORKFOR®



FULL  
GRIP

SOLES  
BY



METAL  
FREE

sympatex®

## FURY BROWN

6047.22.5



### MATERIALS

**UPPER** Crazy Horse Leather  
**LINING** Poromax +  
Membrane Sympatex®  
**SOLE** Michelin North - Nitrile Rubber  
**TOE CAP** Fiberglass  
**INSOLE** Float American + Cork  
**INSOCK** Zero Shock®  
**SIZES** **US Men** 7 - 14  
**US Lady** 9 - 16  
**EU** 40 - 47

### ADVANTAGES

- ✓ Metal Free
- ✓ Anti-slip performance
- ✓ High Durability
- ✓ Versatile
- ✓ Breathable
- ✓ Comfortable
- ✓ Lightweight
- ✓ Waterproof
- ✓ Hi-Vis Bands

### WORK ENVIRONMENT

- Mechanic
- Construction
- Engineering
- Oil platforms
- Outdoor Jobs
- Industry



## FURY BLACK

6C47.20.5






### MATERIALS

**UPPER** Crazy Horse Leather  
**LINING** Poromax + Membrane Sympatex®  
**SOLE** Michelin North - Nitrile Rubber  
**TOE CAP** Fiberglass  
**INSOLE** Float American + Cork  
**INSOCK** Zero Shock®  
**SIZES US Men** 4 - 14  
**US Lady** 6 - 16  
**EU** 37 - 47

### ADVANTAGES

- ✓ Metal Free
- ✓ Anti-slip performance
- ✓ High Durability
- ✓ Versatile
- ✓ Breathable
- ✓ Comfortable
- ✓ Lightweight
- ✓ Waterproof
- ✓ Hi-Vis Bands

### WORK ENVIRONMENT

-  Mechanic
-  Construction
-  Engineering
-  Oil platforms
-  Outdoor Jobs
-  Industry

FULL  
GRIP

SOLES  
BY



METAL  
FREE

## DAKAR

6C07.24.5








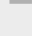
### MATERIALS

**UPPER** Suede Leather  
**LINING** Poromax  
**SOLE** Michelin North - Nitrile Rubber  
**TOE CAP** Fiberglass  
**INSOLE** Float American + Cork  
**INSOCK** Zero Shock®  
**SIZES** US Men 7 - 14  
US Lady 9 - 16  
EU 40 - 47

### ADVANTAGES

- ✓ Metal Free
- ✓ Anti-slip performance
- ✓ High Durability
- ✓ Versatile
- ✓ Breathable
- ✓ Comfortable
- ✓ Lightweight
- ✓ Hi-Vis Bands

### WORK ENVIRONMENT

-  Mechanic
-  Construction
-  Engineering
-  Oil platforms
-  Outdoor Jobs
-  Industry



**TOWORKFOR®**  
BOLDLY SAFE





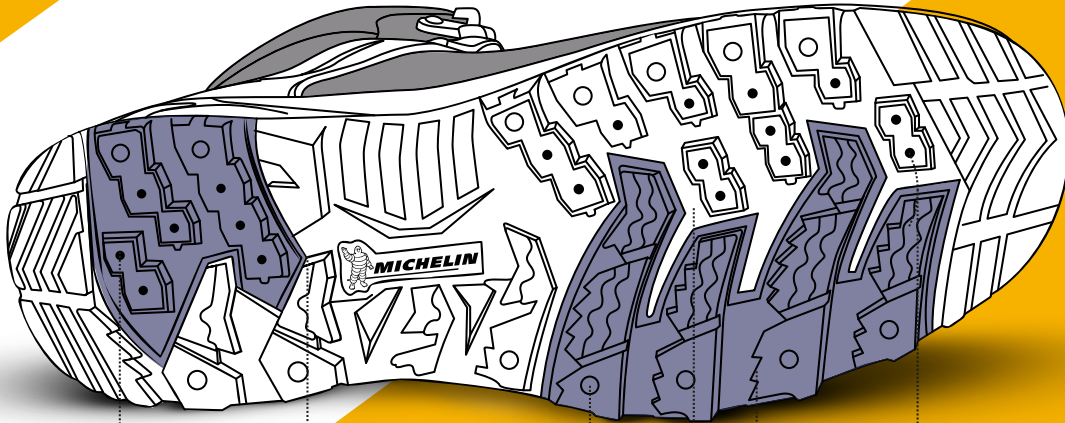
**MICHELIN**

# NITRILE RUBBER SOLE

## TECHNOLOGY



**FULL-GRIP MICHELIN**



**PUMPS**

For absorbing and evacuating water to improve tread contact with all surfaces.

**ANTI-SLIP TREAD**

For excellent adherence on all types of slippery floor surfaces.

**SPIKES**

To break water surface.

**SELF CLEAN DESIGN TREAD SYSTEM**

Designed to keep the outside of the sole clean.

**BITING EDGE**

For optimal performance on ice and snow.

**HIGH EDGE TREAD**

For maximum traction.

**TOWORKFOR®**







***THE STORY  
OF HOW YOU  
SURVIVED  
STARTS WITH YOU  
SEEING THIS AD.***



PROTECTS UP TO  
18000 VOLTS\*

TOWORKFOR®

 **TOWORKFOR®**  
BOLDLY SAFE

**VOLT1**



**TOWORKFOR®**  
BOLDLY SAFE

# VOLT1

## SPECIALLY DESIGNED FOR ELECTRICIANS.



sympatex®

### SYMPATEX LINING AND WATERPROOF MEMBRANE

Waterproof membrane which absorbs the water vapor and removes it through the lining to the outside.

### INSULATING PU INSOCK

Specially developed for those who work with electricity.

### NUBUCK LEATHER

Long lasting, flexible and breathable.

### FLOAT AMERICAN WITH CORK INSOLE

Anti-perforation, non-metallic and anti-static insole.

### FIBERGLASS TOE CAP

Non-metallic and ultra-light toe cap against pressure up to 200 Joules.

### NITRILE RUBBER

### FUSION PU / NITRILE RUBBER SOLE

Extremely soft and comfortable PU midsole in combination with a special insulating nitrile rubber outsole against electrostatic discharges.

### TOE REINFORCEMENT

Extra protection and resistance.





METAL FREE

sympatex®

OHM

6A15.20.5  



METAL FREE

sympatex®

WATT

6B15.20.5  

VOLT1



**THE NUMBER 1 PROTECTION  
FOR HIGH VOLTAGE WORKERS.**





**MATERIALS**

**UPPER** Nubuck Leather  
**LINING** Membrane Sympatex®  
**SOLE** Fusion - PU / Nitrile Rubber  
**TOE CAP** Fiberglass  
**INSOLE** Float American + Cork  
**INSOCK** Insulating PU  
**SIZES US Men** 7 - 14  
**US Lady** 9 - 16  
**EU** 40 - 47

**ADVANTAGES**

- ✓ Metal Free
- ✓ High Durability
- ✓ High temperatures resistance
- ✓ High voltages proof
- ✓ Anti-slip performance
- ✓ Waterproof
- ✓ Rapid Lace System

**WORK ENVIRONMENT**

-  Electricians
-  Railway Workers
-  Electric Cars Mechanics
-  Outdoor Jobs
-  Industry

TOWORKFOR®

\*Tested and approved at a voltage of 18000 V at 60Hz for one minute according to ASTM F2413-18 American standard.

**PROTECT STRONG  
BEARDS AND  
*SOFT LEGS TOO.***



 **TOWORKFOR®**  
BOLDLY SAFE

**MOUNTAIN  
SQUAD**





**TOWORKFOR®**  
BOLDLY SAFE

# MOUNTAIN SQUAD

# THE ULTIMATE SOLUTION FOR FORESTRY WORKERS.



## PERWANGER® & ANILINE PREMIUM LEATHERS

Water and scratch resistant leather with excellent breathable and durability features. Exclusively from alpine pastures and selected suppliers.

## ANTI-CUTTING TECHNOLOGY

Guaranteed protection against all types of cuts caused by chainsaws.



## SKOVSON NITRILE RUBBER SOLE

Exclusive design that guarantees higher flexibility, comfort and elasticity. Special traction and grip for mountain environments.

## SYMPATEX® LINING AND WATERPROOF MEMBRANE

Waterproof membrane which absorbs the water vapor and removes it through the lining to the outside. It keeps the foot warm and dry even in extreme situations.

**sympatex®**





**MATERIALS**

**UPPER** Perwanger Leather  
**LINING** Sympatex  
**SOLE** SKOVSON Nitrile Rubber  
**TOE CAP** Steel  
**INSOLE** American Float  
**INSOCK** Comfort  
**SIZES** **US Man** 5 - 14  
**US Lady** 7 - 16  
**EU** 38 - 47

**ADVANTAGES**

- ✓ High Temperatures Resistance
- ✓ Cut Resistance
- ✓ Protection 360°
- ✓ Water resistant materials

**WORK ENVIRONMENT**

- Lumberjack
- Forest
- Outdoor Jobs

**LUMBERJACK**

8D65.11.5

**SKOVSON**

SKOVSON technology is made with a special high-performance compound, extremely durable and focused on providing the best grip and traction possible. Designed thinking about mountain weather, this technology is wet and slippery conditions proof, perfect for outdoor jobs and activities. SKOVSON technology is also flexible with high levels of ground adaptability, giving you comfort and helping maintain stability.



# TOWORKFOR SOLES

## POP-ENERGY TECHNOLOGY

Pop Energy sole's prime differentiating factor is the E-TPU cushioning technology, offering exceptional energy rebound recovery and high levels of shock absorption. It presents a new Top Traction Control system allowing more movement control. With rubber outsole engineered for maximum traction and a smooth walk, all day long.

**POP-ENERGY®**  
TECHNOLOGY



## DOUBLE DENSITY PU SOLE

This sole blend two different PU densities, where the midsole is extremely soft and comfortable, while the hard PU outsole provides great grip and resistance to oil and abrasion. The minimalist design of the outsole offers excellent traction, anti-slip and durability characteristics to get the job done - no matter the floor.



## TRIPLE SPEED EVA & RUBBER SOLE

TRIPLE SPEED technology is based on the performance of sports shoes. The EVA midsole provides extra lightness, comfort, and impact absorption, while the rubber outsole design offers a self-cleaning system for no dirt accumulation, maximum anti-slip performance and optimal resistance to oil and abrasion.

 **TRIPLE SPEED**



## MICHELIN NORTH NITRILE RUBBER SOLE

Nitrile Rubber stands out for its great fuel, oils, and fire resistance temperatures up to 300°C. The MICHELIN NORTH sole is inspired by ice and mud winning tyres, providing a multifunctional sole with full traction, grip and control, designed for all outdoor work activities.

SOLES BY  **MICHELIN**



## FUSION PU | NITRILE RUBBER SOLE

The FUSION sole has a flexible and lightweight soft polyurethane midsole, which ensures excellent impact return energy and comfort for prolonged use. The hard nitrile rubber outsole provides extreme durability and resistance to fuels, oils and high temperatures.

**NITRILE RUBBER**



## SKOVSON NITRILE RUBBER SOLE

SKOVSON technology is made with a special high-performance, flexible compound and high levels of adaptability to the ground, for extra comfort and stability. Designed for mountain climate and outdoor work or activities, the SKOVSON sole is extremely durable, moisture-proof and provides top grip and traction even in slippery conditions.

**SKOVSON**





# TOWORKFOR INSOLES AND INSOCKS



**ZERO SHOCK**  
COMFORT TECHNOLOGY

Comfort Technology and dynamic arch support. Absorbs shock and provides energy return for stability. Enhanced comfort and performance, perfect for long hours on your feet.



**COMFORT**  
ANTI-FATIGUE INSOCK

Polyurethane foam insole with anti-static dots. Supports and stabilises the foot, optimising weight distribution and facilitating balance.



**CARBON PRO**  
STATIC DISSIPATIVE INSOCK

Made with the best conductive foam for great anti-static, lightness, and impulse performance. Microperforated for better air circulation, quick drying, and anti-odour.



**ANTI STRESS**  
ULTRA RECOVERY TECHNOLOGY

Made with special foam, this insole relieves pressure on the heel to promote active recovery and prevent muscle fatigue. Light, anti-static, breathable and very comfortable to wear.



**Q-FLEX AMERICAN**  
COMPOSITE INSOLE

Non-metallic and anti-static protective insole, made of advanced composite materials. Anti-perforation protection, with greater flexibility and ergonomic, thermally insulating.



**CORK**  
CORK INSOLE

Made with high quality materials with excellent resistance to water, petrol, and oils. It's perfect for heavy and long-lasting physical work. It works as a thermal regulator, and it is also very flexible and has great breathability properties.



**FLOAT AMERICAN**  
FLOAT INSOLE

Anti-perforation protective insole with non-metallic, sweat-absorbing, lightweight and flexible characteristics, which provides high levels of comfort. Ideal insole for shoes used for long daily routines.

# TOWORKFOR TOE CAPS



**FIBERGLASS**  
FIBERGLASS TOE CAP

Protects the toes against mechanical damage and pressures of up to 200 Joules. Does not disintegrate under high loads. It is thermally insulating. Up to 50% lighter than insulating steel.



**ALUMINIUM**  
ALUMINIUM TOE CAP

Protects the toes against mechanical damage and pressure up to 200 Joules. Not subject to corrosion, has low thermal conductivity. Up to 50% lighter than steel.



**STEEL**  
STEEL TOE CAP

This traditional, reliable, and safe toe cap protects the toes against mechanical damage and pressures of up to 200 Joules.

# TOWORKFOR MATERIALS

sympatex®



## SYMPATEX® WATERPROOF MEMBRANE

The SYMPATEX® lining in safety shoes enhances their performance by providing optimal breathability and waterproofing, ensuring comfort and protection even in demanding work environments.



## ANILINE PREMIUM LEATHER

High quality leather with excellent resistance to water, petrol, and oils. It is great for heavy physical work, long-lasting. This material is very flexible and has good breathability features.



## NUBUCK NUBUCK LEATHER

Soft treated leather, with excellent perspiration characteristics that significantly increase the level of comfort. Excellent resistance and durability.



## SUEDE SUEDE LEATHER

Treated leather with excellent breathability and flexibility characteristics. Not water resistant, but perfect for working in hot and dry weather.



## CRAZY HORSE CRAZY HORSE LEATHER

High-quality leather with excellent resistance to water, petrol, and oils, making it ideal for heavy physical work and long-lasting use. This material is very flexible and features good breathability.



## MICROFIBER POLYESTER FIBERS

Innovative material made of polyester fibers, water resistant and highly durable. Allows natural breathing. Prevents a wide range of colours that keeps with the shoe throughout its life. Animal Friendly.



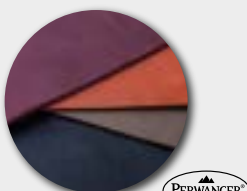
## MESH POROMAX ABSORBENT LINING

Innovative technology due to a special structure of internal chambers that removes hot moist air over the top of the shoe and facilitates uniform temperature distribution within the shoes.



## MESH SPACE 3D MESH LINING

Special Mesh knit for excellent breathability and flexibility. The high durability of the material allows to keep the properties throughout the period of use.



PERWANGER  
LEATHER

## PERWANGER® PREMIUM LEATHER

Exclusively from premium high quality Alpine region cattle, this premium leather is waterproof, breathable, scratch-resistant, and highly durable even in rough and rocky terrain.



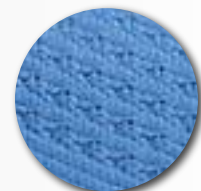
## RIPSTOP POLYESTER FIBERS

Ripstop material is a lightweight, highly durable fabric characterized by its unique crosshatch pattern of reinforced threads. This construction provides exceptional resistance to tearing and ripping, making it ideal for applications requiring both strength and longevity.



## FLYKNIT POLYESTER FIBERS

FLYKNIT is an innovative technology that offers exceptional breathability, flexibility, and abrasion resistance. The highly adaptable fibers conform easily to the ankle and foot, while the anti-sweat properties ensure feet remain dry even in hot and humid conditions.



## DRY FEET KNIT POLYESTER FIBERS

DRY FEET KNIT is a revolutionary technology that is highly breathable, flexible and abrasion resistant. The extremely malleable fibres are designed to easily adapt to the ankle and foot, while the anti-sweat proportions help keep the foot always dry even in hot and moist environments.

# TOWORKFOR STANDARDS

## STANDARDS



### CSA White Rectangle

The CSA White rectangle with orange Greek letter omega - Ω - indicates soles that provide resistance to electric shock. Such certified footwear contains a sole and heel design assembly that, at the point of manufacturing, has electrical insulating properties to withstand 18,000 Volts and a leakage current not exceeding 1mA for 60 seconds.



### CSA Yellow Rectangle

The CSA Yellow rectangle with a green "SD" and grounding symbol indicates soles are static-dissipative. The outer soles are made from an antistatic compound, capable of dissipating an electrostatic charge in a controlled manner. The test criteria are 106 to 108 Ohms. Note that SD footwear without toe protection will not have sole protection certified by CSA.



### CSA Blue Rectangle

The CSA Blue Rectangle indicates Grade 1 protective toe without sole puncture protection. Grade 1 toe withstands impacts up to 125 joules.



### CSA Green Triangle

The CSA Green triangle patch indicates sole puncture protection with Grade 1 Protective toe to withstand impacts up to 125 joules. Sole puncture protection is designed to withstand a force of not less than 1200 Newtons (270 pounds).



### Metatarsal Protection

The Metatarsal Protection symbol indicates protection for the metatarsal region of the foot when working around heavy objects. Toe protection is required for all metatarsal protective footwear.



### Chainsaw Protection

The Chainsaw Protection symbol indicates footwear that provides protection when using chainsaws and other cutting equipment.



### Super Static Dissipative

The CSA Yellow rectangle with a green "SD+" and grounding symbol indicates soles are static-dissipative. The outer soles are made from an antistatic compound, capable of dissipating an electrostatic charge in a controlled manner. When tested in accordance to ASTM F2412, each test specimen shall fall within a range of 106 Ohms - 3.5 x 10<sup>7</sup> Ohms.

## STANDARDS



**FIBERGLASS**  
Toecap impact resistant up to 200 Joules



100% NON METALLIC



**ALUMINIUM**  
Toecap impact resistant up to 200 Joules



WATER IMPERMEABILITY



**STEEL**  
Toecap impact resistant up to 200 Joules



RESISTANCE TO WATER ABSORPTION



**Q-FLEX AMERICAN**  
Perforation resistant



CHAINSAW PROTECTION



**FLOAT AMERICAN**  
Perforation resistant



MESH SPACE 3D



**ELECTRIC HAZARD PROTECTION**



MESH POROMAX



MICROFIBER



NUBUCK

## SIZE CHART

<b>EU</b>	36	37	38	39	40	41	42	43	44	45	46	47
<b>US</b>	3	4	5	6	7	8	9	10	11	12	13	14
<b>US WOMEN</b>	5	6	7	8	9	10	11	12	13	14	15	16
<b>CM</b>	24	24,5	25	25,5	26	26,5	27	27,5	28	28,5	29	29,5



# TOWORKFOR®

BOLDLY SAFE

**OFFICIAL  
DISTRIBUTOR**

**WARWICK  
INTL.**

**James Steele**

*Sales Representatives  
British Columbia & Yukon*

☎ (604) 360-7570

@ james@concordesales.ca

**Marquy Dubois**

*Business developments  
Northern Ontario Sales Representatives*

☎ (581) 888-4245

@ marquy.dubois@warwickinternational.ca

**Rob Hrapchak**

*Sales Representatives  
Northern Alberta & North West Territories*

☎ (403) 807-2520

@ rob@concordesales.ca

**Jean-Philippe Fortin**

*Sales Representatives  
Southern Ontario & Québec*

☎ (579) 420-1471

@ p@fortinsales.ca

**Kevin Schmidt**

*Sales Representatives  
Southern Alberta, Saskatchewan & Manitoba*

☎ (204) 894-8870

@ kevin@concordesales.ca

**Rick Boudreau**

*Sales Representatives  
Atlantic Provinces*

☎ (506) 874-3040

@ rboudhome@gmail.com

**Chanda Simington**

*Customer Relations  
Western Provinces*

☎ (403) 669-9363

@ chanda@concordesales.ca

**France Bernard**

*Customer Relations  
Eastern Provinces*

☎ (819) 559-8585

@ sales@warwickinternational.ca

**STALK US**



BUILT BY **AMF**